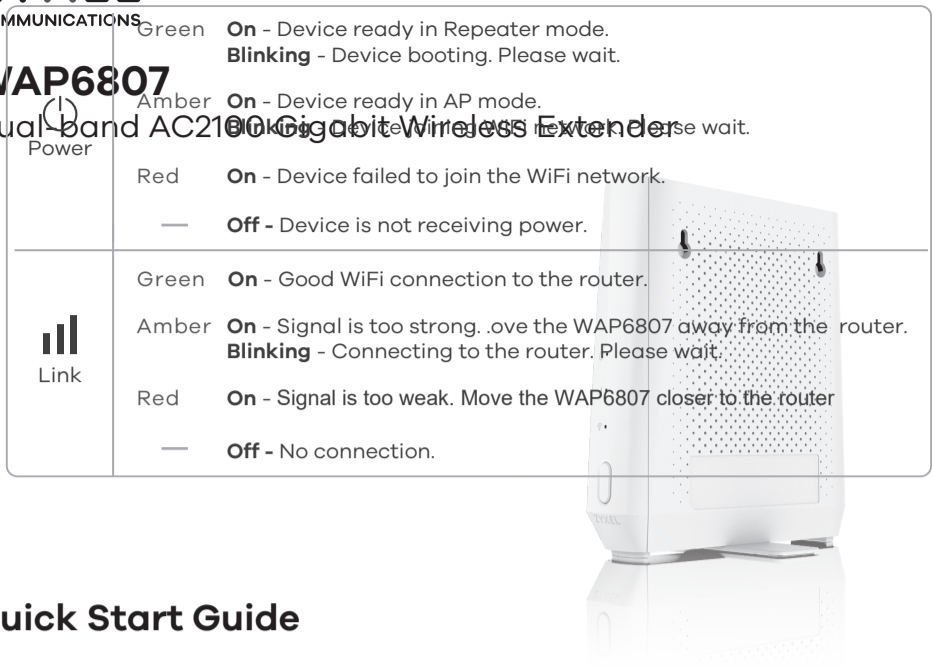


WAP6807

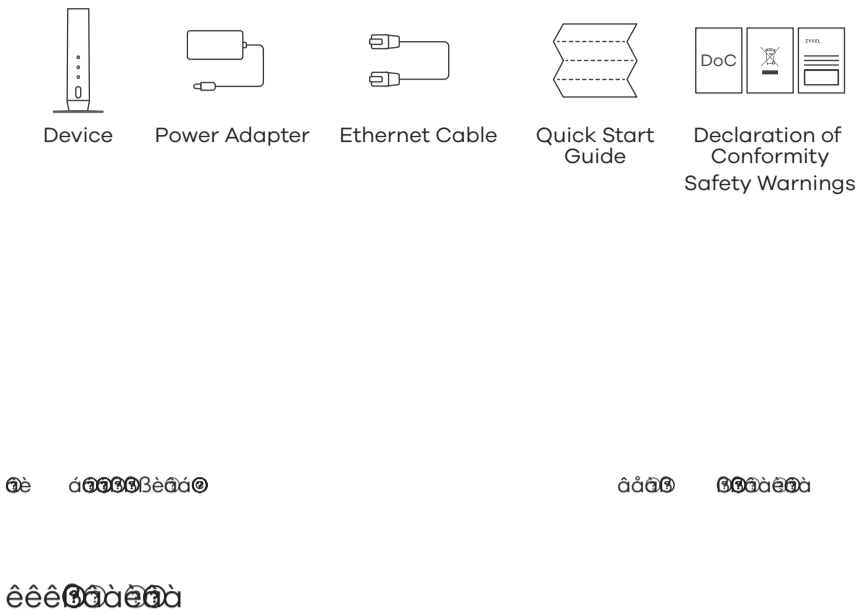
Dual-band AC2100 Gigabit Wireless Extender



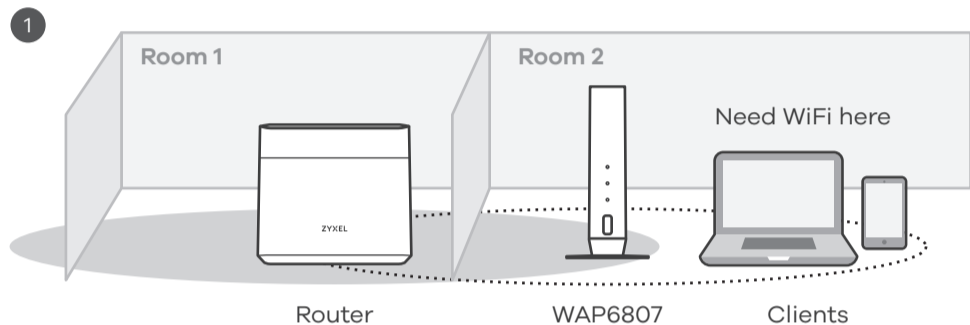
Power	Green	On - Device ready in Repeater mode. Blinking - Device booting. Please wait.
	Amber	On - Device ready in AP mode. Blinking - Device joining WiFi network. Please wait.
Link	Red	On - Device failed to join the WiFi network. Off - Device is not receiving power.
	Green	On - Good WiFi connection to the router.
Link	Amber	On - Signal is too strong. Move the WAP6807 away from the router. Blinking - Connecting to the router. Please wait.
	Red	On - Signal is too weak. Move the WAP6807 closer to the router. Off - No connection.

Quick Start Guide

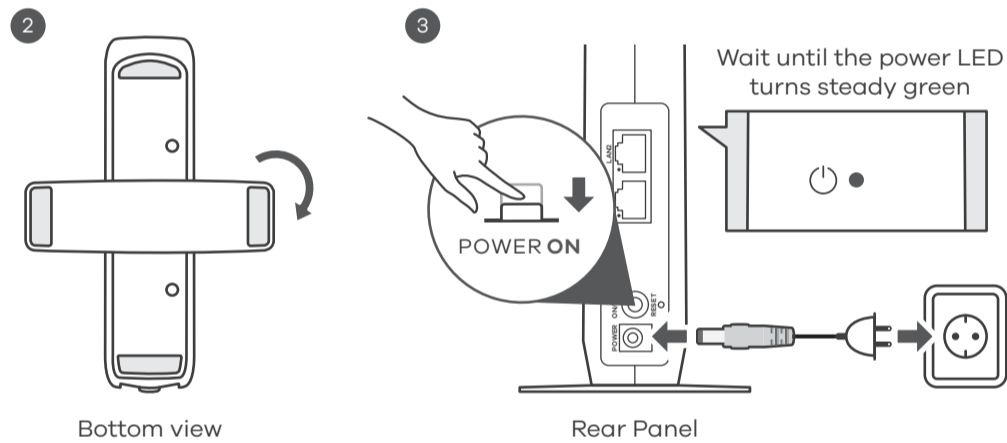
Package Contents



Setting Up the WAP6807



- Place the **WAP6807** where you want to extend your wireless network.
- Rotate the stand on the bottom of the **WAP6807** 90 degrees.
- Plug in the power adapter and turn on the **WAP6807**. Wait for about 2 minutes. The Power LED lights up steady green.



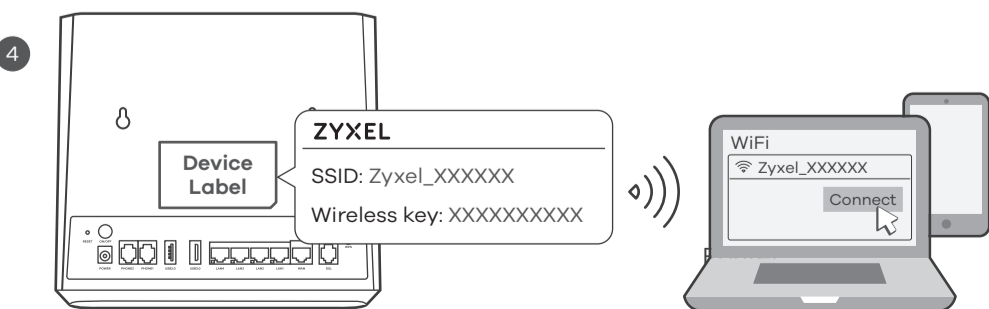
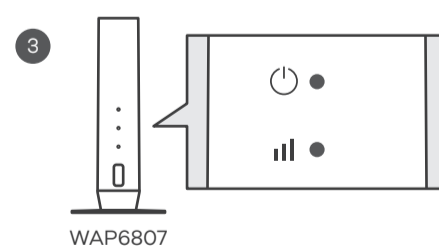
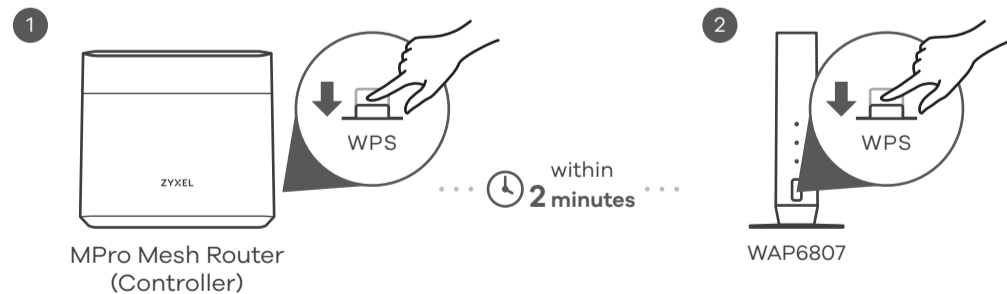
MPro Mesh Network Scenario 1: With MPro Mesh Router

In this scenario, you have a Zyxel router that supports MPro Mesh. If you do not, go to Scenario 2.



Note: To check if your Zyxel router supports MPro Mesh, see the MPro Mesh solution page on the Zyxel website.

Note: To set up your WAP6807 with the MPro Mesh app, scan the QR code in the last page.

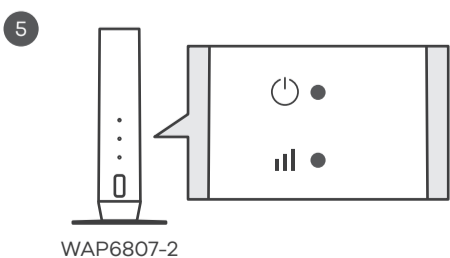
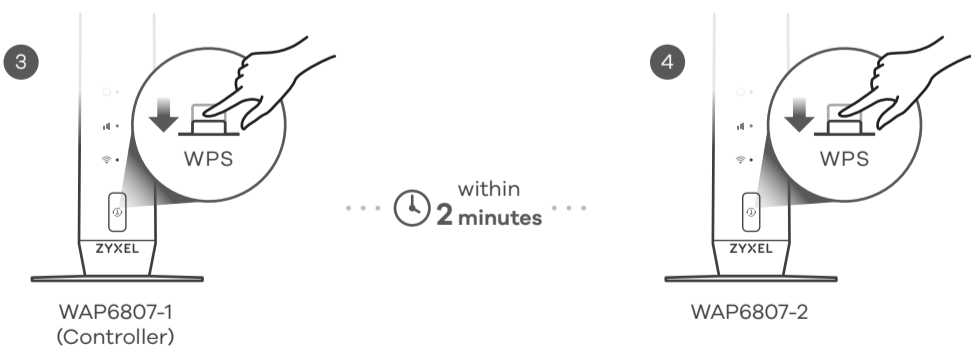
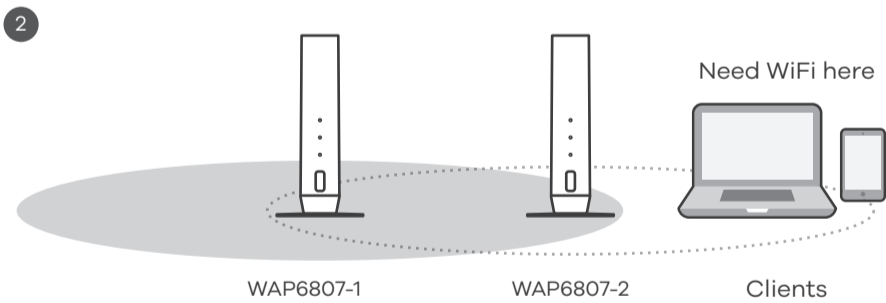
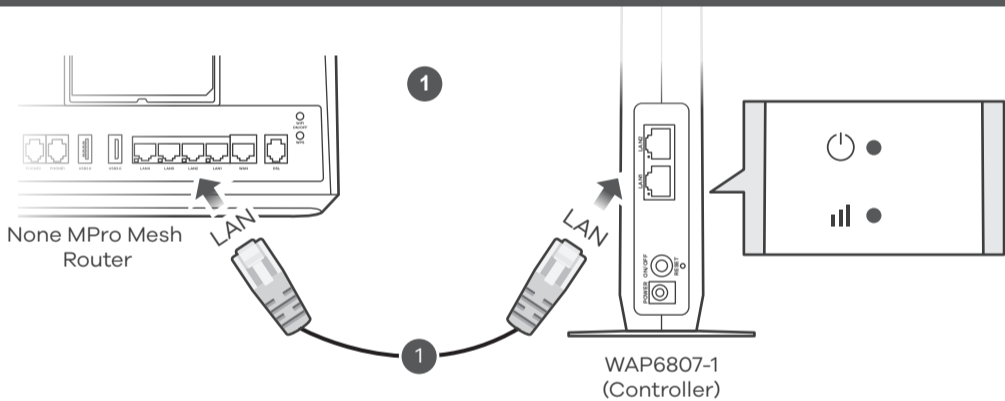
- Press the WPS button on the **Zyxel MPro Mesh Router**. Release it when the **Zyxel MPro Mesh Router** WPS LED blinks.
  - Press the WPS button on the **WAP6807** once and release it. The POWER and LINK LEDs blink amber indicate the pairing is in process.
  - The **WAP6807** LINK and POWER LEDs light up green if the connection is successful.
  - On your smartphone or wireless client, find the **Zyxel MPro Mesh Router** SSID. Enter the **Zyxel MPro Mesh Router** wireless key to connect.
- Note: The POWER LED on the **WAP6807** indicates if the **WAP6807** is ready to join the WiFi network. The LINK LED on the **WAP6807** indicates WiFi link quality and WPS pairing status. See the LED table.










Power	Green	On - Device ready in Repeater mode. Blinking - Device booting. Please wait.
	Amber	On - Device ready in AP mode. Blinking - Device joining WiFi network. Please wait.
	Red	On - Device failed to join the WiFi network. Off - Device is not receiving power.
Link	Green	On - Good WiFi connection to the router.
	Amber	On - Signal is too strong. Move the WAP6807 away from the router. Blinking - Connecting to the router. Please wait.
	Red	On - Signal is too weak. Move the WAP6807 closer to the router. Off - No connection.

 Power	Green	<b>On</b> - Device ready in Repeater mode. <b>Blinking</b> - Device booting. Please wait.
	Amber	<b>On</b> - Device ready in AP mode. <b>Blinking</b> - Device joining WiFi network. Please wait.
	Red	<b>On</b> - Device failed to join the WiFi network.
	—	<b>Off</b> - Device is not receiving power.
 Link	Green	<b>On</b> - Good WiFi connection to the router.
	Amber	<b>On</b> - Signal is too strong. Move the WAP6807 away from the router. <b>Blinking</b> - Connecting to the router. Please wait.
	Red	<b>On</b> - Signal is too weak. Move the WAP6807 closer to the router
	—	<b>Off</b> - No connection.

## MPro Mesh Network Scenario 2: With Non-MPro Mesh Router and Two WAP6807s



- EN** ① Use the included Ethernet cable to connect the **WAP6807** LAN port to the **Non-MPro Mesh Router** LAN port. Wait until the **POWER**  LED lights up green.
- ② Place the second WAP6807 (**WAP6807-2**) where you want to extend your wireless network.
- ③ Press the WPS button once on the WAP6807 connected directly to the router (**WAP6807-1**).
- ④ Press the WPS button once on **WAP6807-2**. The **POWER**  and **LINK**  LEDs blink amber indicate the pairing is in process.
- ⑤ The **POWER**  and **LINK**  LEDs light up green if the connection is successful.
- ⑥ On your smartphone or wireless client, find the **WAP6807-1** SSID. Enter the **WAP6807-1** wireless key to connect.
- Note:** The **POWER**  LED on the **WAP6807-2** indicates if the **WAP6807-2** is ready to join the WiFi network. The **LINK**  LED on the **WAP6807-2** indicates WiFi link quality and WPS pairing status. See the LED table.

